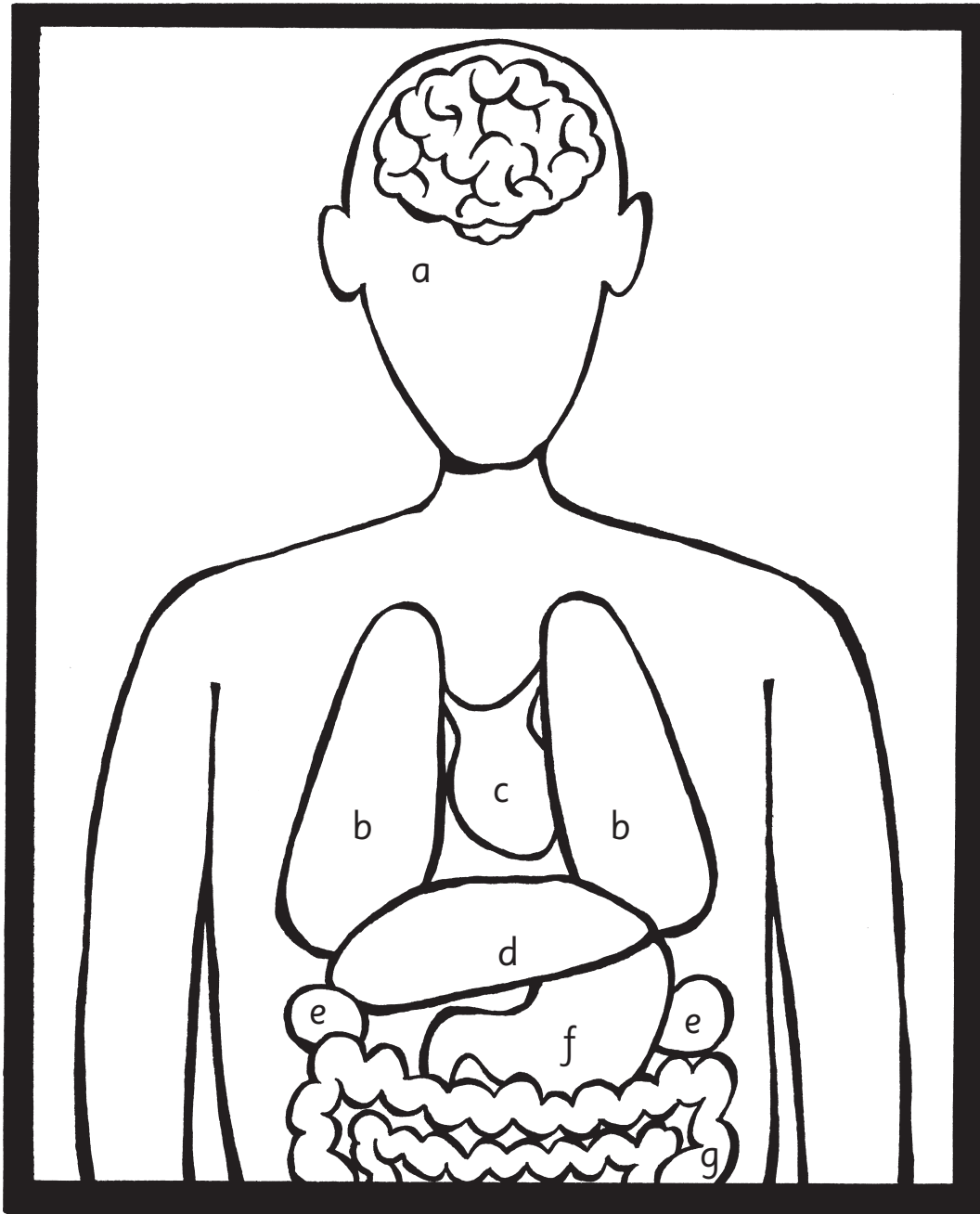


Which internal organ is which?

Draw a line to match a name to each organ.



- | | | | |
|------------|---------------|------------|----------|
| 1. heart | 2. lungs | 3. brain | 4. liver |
| 5. stomach | 6. intestines | 7. kidneys | |

Did you know?

Your small intestine is really long – around six metres.
That's about five times as tall as you!
No wonder it can take up to three days to digest a meal!